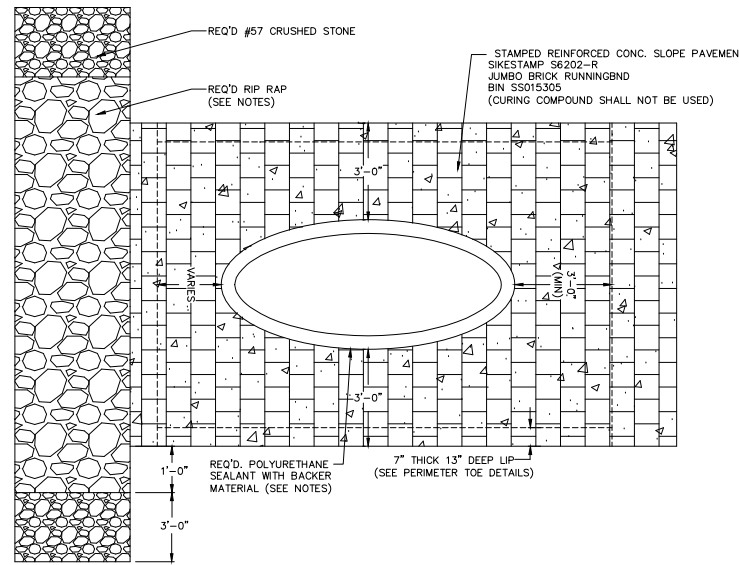


TYPICAL CONCRETE SLOPE PAVEMENT OUTFALL DETAIL

NTS.

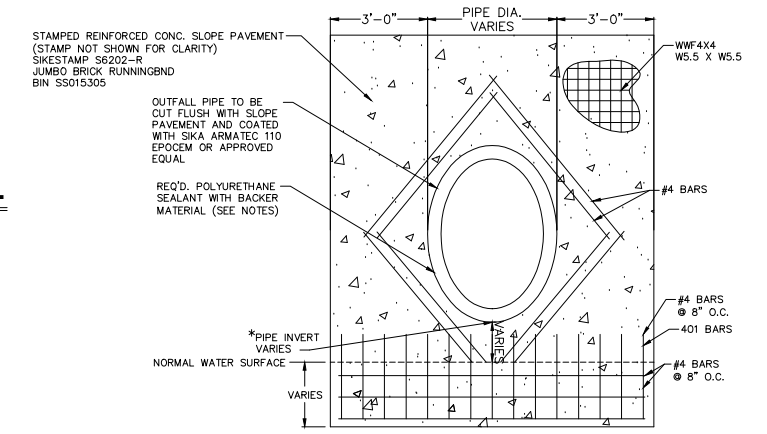


PLAN - TYPICAL CONCRETE SLOPE PAVEMENT OUTFALL

NTS.

NOTES:

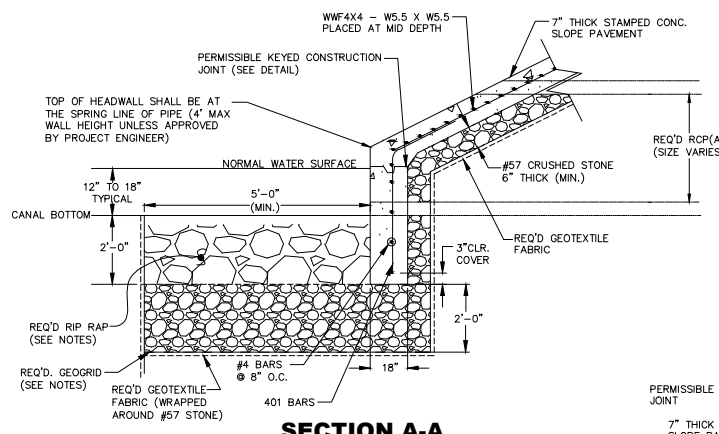
1. THE DEPARTMENT OF ENGINEERING RESERVES THE RIGHT TO MODIFY OUTFALL PIPE DETAIL IN ACCORDANCE WITH EXISTING FIELD CONDITIONS ENCOUNTERED DURING CONSTRUCTION.
2. NO TRANSVERSE JOINT SHALL BE CLOSER THAN 3'-0" FROM THE OUTSIDE OF ANY PIPE EXITING SLOPE PAVING.
3. ALL BAR BENDS SHALL BE A.C.I. STANDARD UNLESS OTHERWISE NOTED.
4. ALL REINFORCING BARS SHALL BE COLD BENT TO THE SHAPES SHOWN ON THE PLANS AROUND A PIN HAVING A DIAMETER OF 3".
5. CAST-IN-PLACE STRUCTURAL CONCRETE SHALL BE CLASS A WITH A MINIMUM COMPRESSIVE STRENGTH OF 4000 PSI IN 3 DAYS.
6. DIMENSIONS RELATING TO REINFORCING STEEL FABRICATION ARE OUTSIDE-TO-OUTSIDE OF BAR UNLESS OTHERWISE NOTED.
7. DIMENSIONS RELATING TO REINFORCING STEEL SPACING ARE CENTER-TO-CENTER OF BAR.
8. ALL REINFORCING STEEL COVER SHALL BE 3" UNLESS OTHERWISE NOTED ON THE PLANS.
9. REINFORCING STEEL SHALL BE DEFORMED REBARS CONFORMING TO THE REQUIREMENTS OF ASTM A615, GRADE 60.
10. THE MINIMUM LAP SPLICE LENGTH FOR #4 REINFORCING BARS SHALL BE 24", UNLESS SHOWN OTHERWISE.
11. GEOTEXTILE FABRIC SHALL BE MIRAFIX 140N, PROPEX GEDTEXT 401 OR APPROVED EQUAL NON-WOVEN WITH A MIN. OVERLAP OF 36".
12. RIP RAP SHALL BE CLASS 55LB IN ACCORDANCE TO TABLE 711-1 ON PAGE 390 OF THE 'BLUE BOOK.'
13. POLYURETHANE SEALANTS SHALL BE IN ACCORDANCE TO SECTION 10005.02B ON PAGE 780 OF THE 'BLUE BOOK.'
14. GEDGRID SHALL BE TENSAR BX1200, TENSAR TYPE II, SYNTAC SBX12 OR AN APPROVED EQUAL WITH A MIN. OVERLAP OF 36".



PLAN - TYPICAL RCP TIE-IN DETAIL

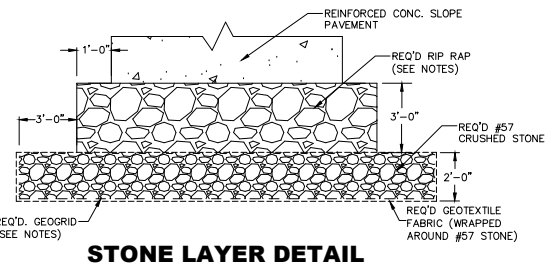
(FOR PIPE INVERTS GREATER THAN 3' ABOVE CANAL BOTTOM)

NTS.



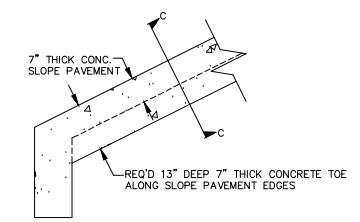
SECTION A-A

NTS.



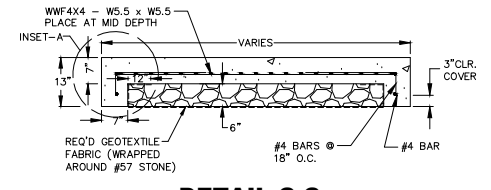
STONE LAYER DETAIL

NTS.



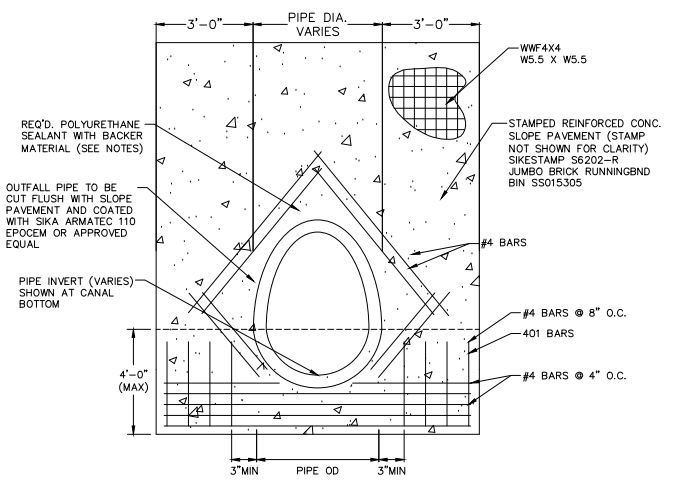
PERIMETER LIP DETAIL

NTS.



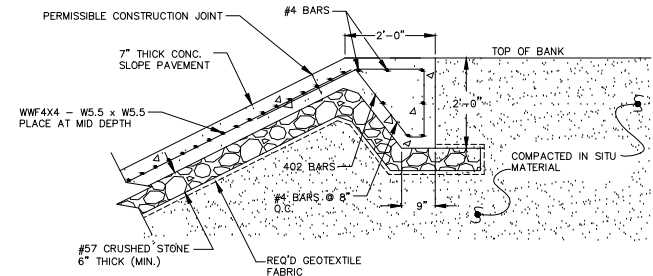
DETAIL C-C PERIMETER LIP DETAIL

NTS.



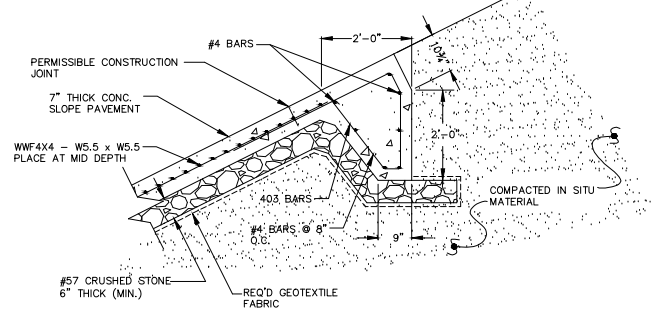
PLAN - TYPICAL RCP(A) TIE-IN DETAIL-ALT 1

NTS.



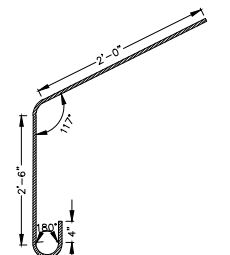
DETAIL B-B "TOE DETAIL B"

NTS.



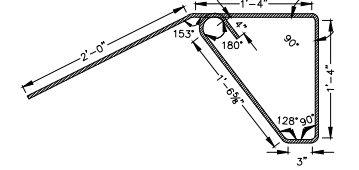
DETAIL B-B "TOE DETAIL A"

NTS.



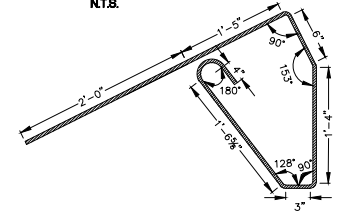
401 BAR

NTS.



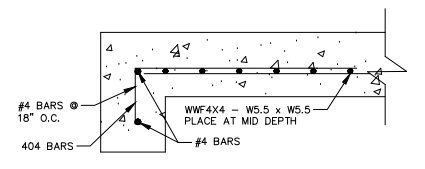
402 BAR

NTS.



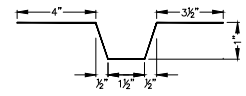
403 BAR

NTS.



INSET-A

NTS.



KEYED CONSTRUCTION JOINT

NTS.

JEFFERSON PARISH DEPARTMENT OF ENGINEERING			
DRAWING TITLE TYPICAL OUTFALL PIPE DETAIL WITH VINYL SHEET PILES			
DRAWN BY: M.Z.	DATE: 03/28/2022	DESIGNED BY: M.Z.	DATE: 03/28/2022
REVISION BY: M.Z.	DATE: 03/26/2024	REVISION BY: -	DATE: -
REVISION BY: -	DATE: -	REVISION BY: -	DATE: -
SOFT: AUTOCAD LT. 2020	APP: -	APP: -	APP: -
FILE NUMBER: -	APP: -	APP: -	APP: -